

Consulting



#7

OUR CHALLENGE

Supporting local
agriculture with an
environmentally-friendly
solution



A dam to counter drought and support local agriculture

Catherine runs a five-hectare sugar cane farm that has been handed down through the generations. Her agricultural rum, made with delicately spiced cane juice according to a secret family recipe, has secured her reputation across Guadeloupe, and particularly in her hometown, Côte-au-vent, in the municipality of Goyave.

But in the last few years, her harvest has been heavily affected by global warming. In 2017, Hurricane Maria devastated everything in its path and replanting the canes took a huge amount of work. Today, the periods of drought are more and more intense and like all the region's farmers and livestock breeders, Catherine is in the firing line of these climate hazards.



How can droughts be addressed to guarantee water for farmers?

How can the archipelago's rich ecosystem be preserved?



**Discover the Moreau dam,
a major infrastructure
project for irrigating
Guadeloupe's crops!**



OBJECTIVE

Supporting local farmers in their fight against drought caused by global warming.

1,000,000 m³

of water will be stored for agricultural purposes by the Moreau dam

⇒ **Combining geological, geotechnical and environmental skills to make a major infrastructure project a reality.**

- Alongside **Guadeloupe's regional and local councils**, SUEZ Consulting teams have been working since 2006 on the construction of the Moreau dam, a 500,000 m³ earth embankment in the municipality of Goyave on the east coast of Basse-Terre, Guadeloupe. After several years studying the feasibility of the project and its environmental impact, the construction began in 2014.
- Built on a foundation of residual rock of volcanic origin formed at the site through alteration, i.e. without transport, the embankment **255 metres long** and **27 metres high**, made with clay and sand, will provide the water needed for agricultural production in **Basse-Terre** during droughts.

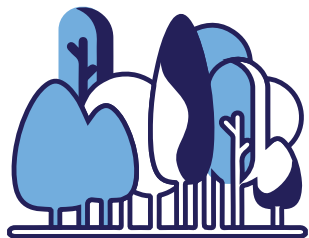


SOLUTION

⇒ **ENSURING** optimum environmental coordination:

- **Natural environments are a central concern:**
 - Protecting the surrounding plant life by transplanting rare species.
 - Protecting aquatic wildlife by maintaining a constant flow downstream from the dam in the Zombi ravine.
 - Integrating the project into the landscape by restoring and rehabilitating the site and the surrounding area following the work, replanting local plant species.
 - Training, raising awareness and following up the contractors to ensure an environmentally-friendly construction site.
- **Limiting disruption for neighbours:** construction of a specific track for work and convoys limited by the preferential use of materials present on site.

DID YOU KNOW

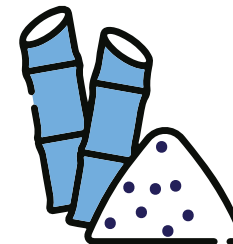


74.500 HECTARES
OF FOREST AREA,
40% OF THE TERRITORY

Source: agriculture.gouv.fr

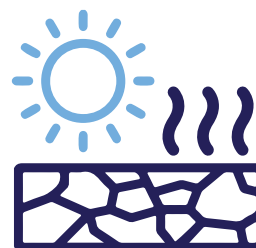
592,000 TONNES
OF SUGAR CANE PRODUCED
PER YEAR IN GUADELOUPE

Source: agriculture.gouv.fr



52.165 HECTARES
OF AGRICULTURAL LAND,
30% OF THE TERRITORY

Source: agriculture.gouv.fr



A RAINFALL DEFICIT CAN REACH **80%**
IN CERTAIN REGIONS OF GUADELOUPE

Source: guadeloupe.developpement-durable.gouv.fr

And you,
how do you
encourage local
agriculture?



Find out all our solutions to support the emergence of
tomorrow's sustainable agriculture of at [suez.com](https://www.suez.com)