



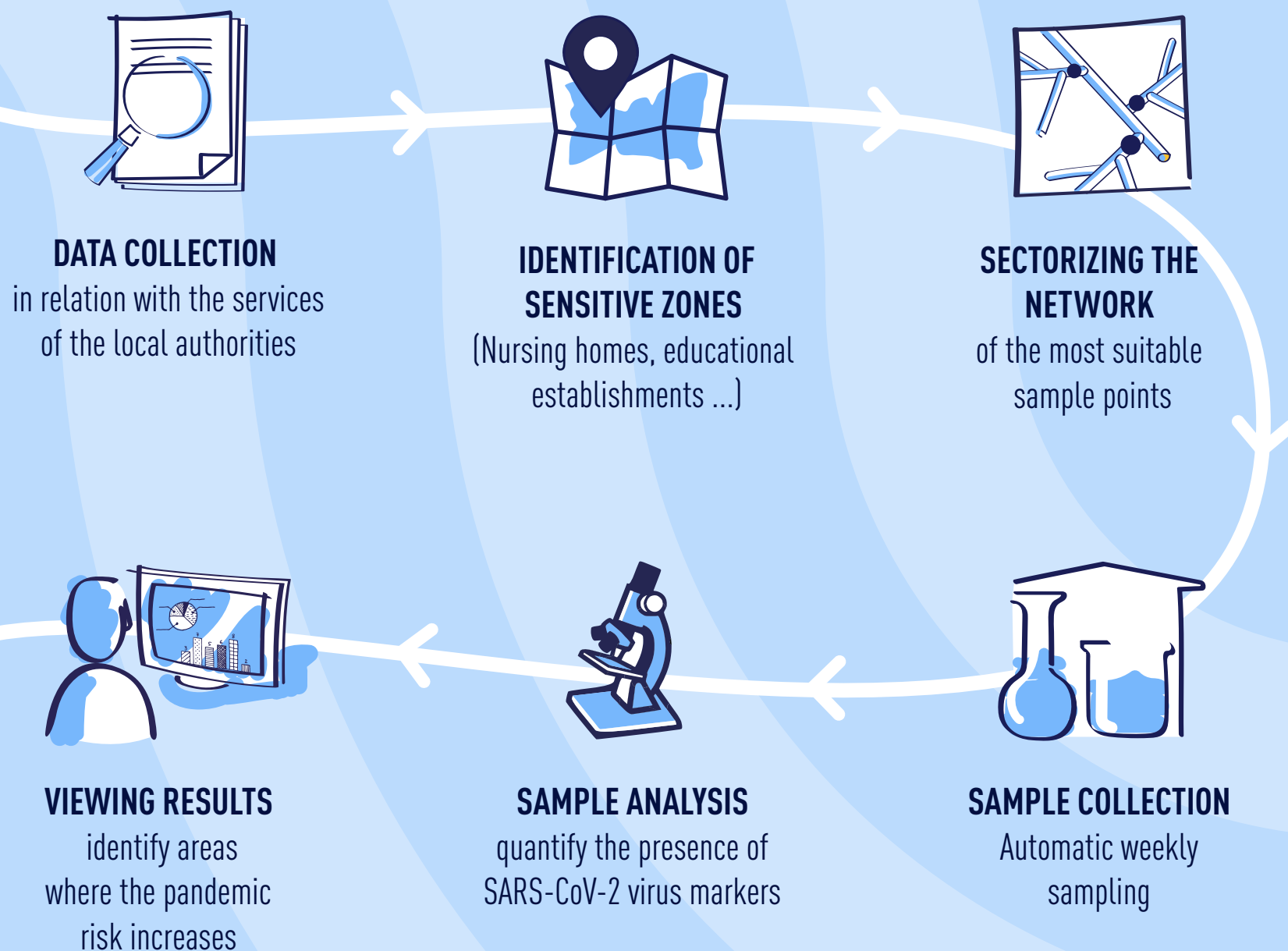
An offer at the disposal of local authorities

Detect and locate virus markers in waste water.

What is the use ?

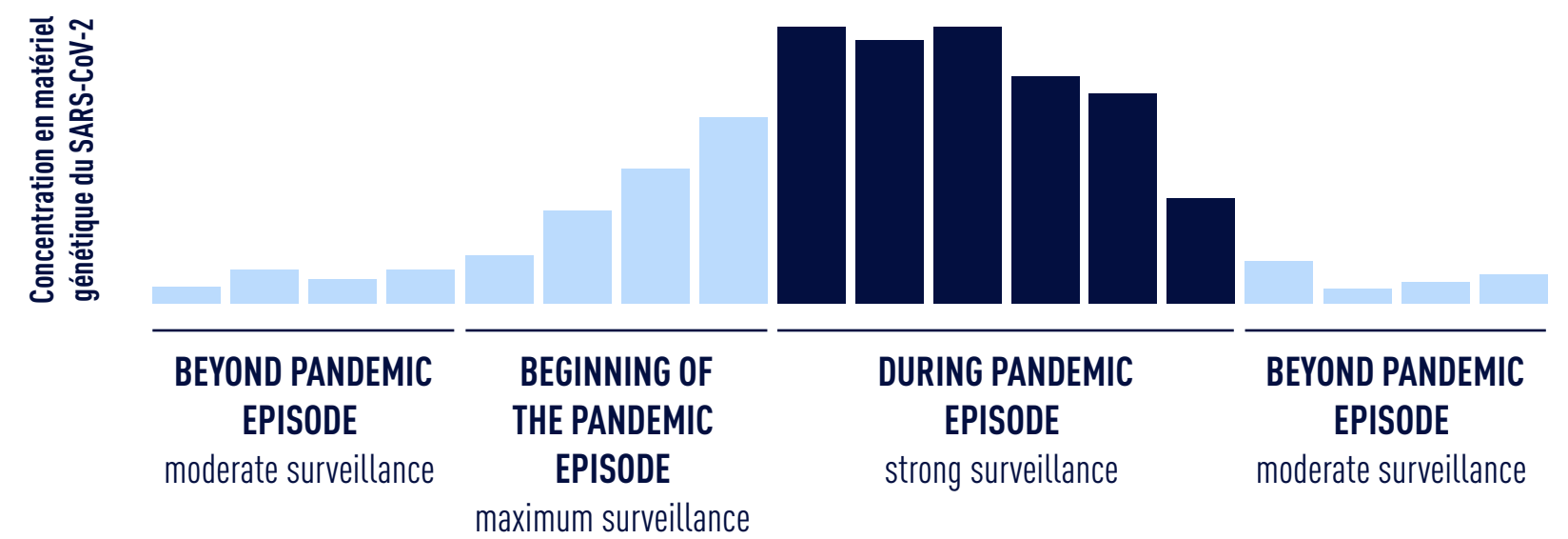
Take action earlier and locally to restrain the pandemic and restrain its impact on the economy and the daily life of citizens.

How does it work ?



A customized solution

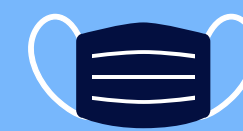
> A monitoring level that adapts to the pandemic situation :



> Precise data to support local authorities in establishing their **action plans** :



MONITOR THE HIGH-RISK FACILITIES
(Nursing homes, health centers ...)



SUGGEST PREVENTIVE MEASURES IN ADVANCE
(screening tests, campaigns to strengthen protection gestures...)



LIMIT ACCESS
at certain risk-prone establishment

Key figures

70 cities and 12.6 million people benefit from this solution in Spain.

11 municipalities in the greater Orleans metropolitan area are implementing the service.

Surveillance strategy (number of sample points, locations) are **adapted to each area** (population, sensitive zones, sectorization) in partnership with the local authorities.