



Paris, March 24, 2021

Origins.earth introduces the “carbon weather report” for the second lockdown: a respite for CO₂ emissions, down 35% in Paris

A few days after the announcement of tighter health restrictions in 16 French departments, including in the Paris region (Ile-de-France), an analysis of CO₂ emissions during France's second lockdown (November-December 2020) indicated a temporary reduction in emissions of some 35% for the city of Paris and of 22% for the Greater Paris region (Ile-de-France).

Measurement and identification of sources of greenhouse gas emissions are essential tools in the fight against global warming and for the rolling out of solutions tailored to the challenges of the energy transition.

The only solution developed by Origins.earth, in partnership with the French Climate and Environment Sciences Laboratory (Laboratoire des Sciences du Climat et de L'Environnement - LSCE) and the City of Paris, [had already allowed to quantify the impact of the first lockdown \(March-May 2020\) on CO₂ emissions](#). The first lockdown led to a sharper reduction in emissions, of around 54% for Paris and 42% for the Ile-de-France region. The weaker decline in emissions during the second lockdown can be attributed primarily to the continuation of a significant portion of economic activity as well as road traffic.

The Origins.earth solution offers unrivaled functions, both in terms of its continuous measurement of greenhouse gas emissions and its analysis models for the data collected: “For CO₂ emissions, traditional methods based on inventories are no longer sufficient, as they provide overviews with 2 to 3 year lags. Our technology stands out by offering dynamic comprehensive snapshots almost in real time. The LSCE's high precision measurement stations and ours detect CO₂ clouds, then we model the weather conditions to determine the origins of the emissions,” David Duccini, Chief Executive Officer of Origins explains.

As a result, the technology offered by Origins.earth allows the sources of greenhouse gas emissions to be identified with precision and for concrete actions to be taken to reduce or eliminate them. It differs from the carbon reports carried out so far, which only offer a static view, based on emission assumptions and local activities.

“The lockdown led to a very short-lived decline in emissions, and for the City of Paris's carbon reduction targets to be achieved, efforts must continue together with systemic changes,” outlines Philippe Ciais, a member of the French academy of sciences and a research manager at LSCE, involved in the project.

“It is the ability to obtain emissions data almost in real time which is an interesting innovation for Paris and every city,” commented Yann François, Climate, energy and circular economy manager for the City of Paris. “Paris has been working with the LSCE for more than 10 years to fine-tune models for measuring CO₂ in real time. Right from

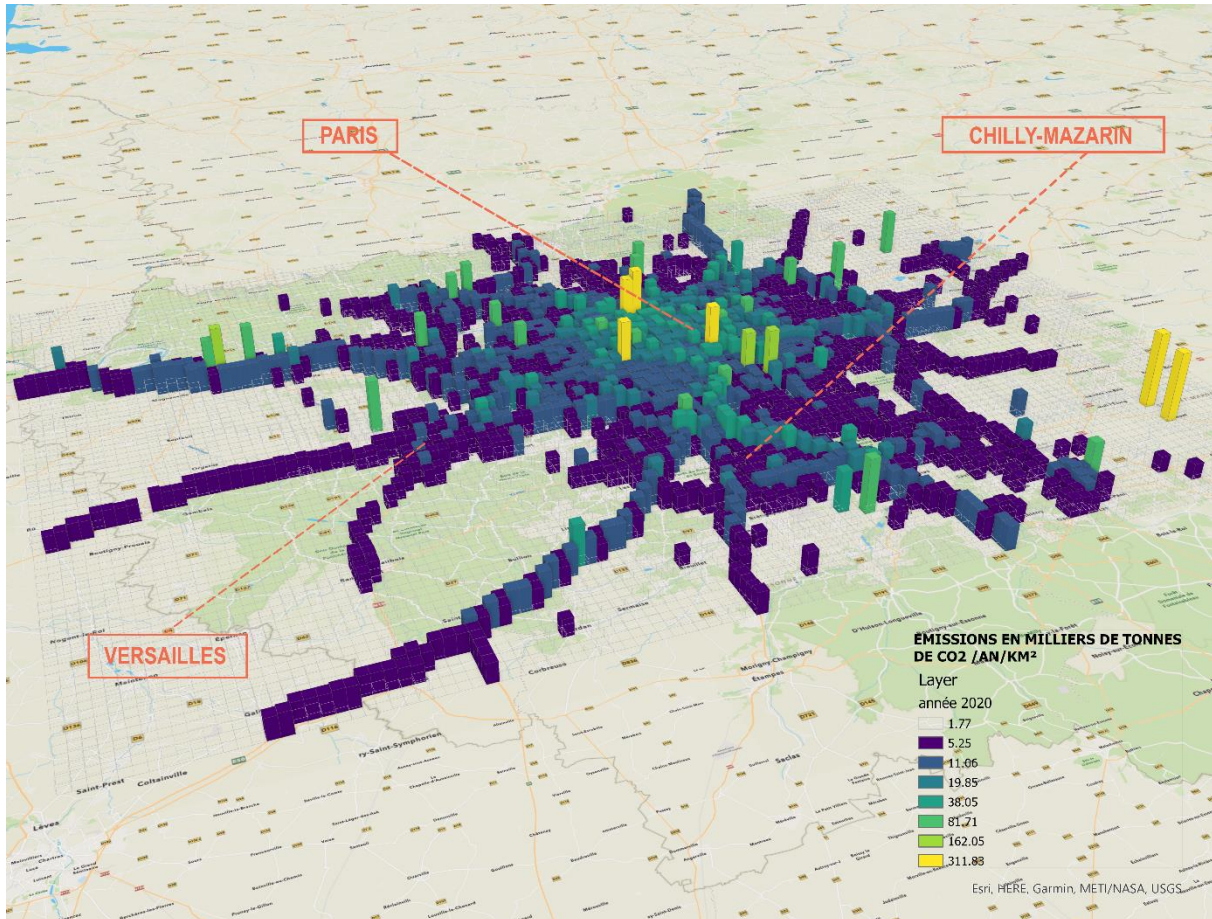
SUEZ

Head Office: Tour CB21 - 16, Place de l'Iris, 92040 Paris La Défense Cedex, France - Tel: +33 (0)1 58 81 20 00 - www.suez.com

Limited Liability Company with a share capital of €2,513,450,316 – Siren (French business administration number) 433 466 570 RCS Nanterre – VAT FR 76433 466 570

its creation, Paris supported the Origins.earth project in order to be able to benefit from the latest scientific progress to support the climate transition in Paris. This should allow for the opening of new steering prospects for the low carbon transition, the rapid assessment of the impacts of projects and a new form of dialogue with Parisians.”

The challenges of the energy transition, currently under discussion in France, are also at the heart of the Climate and Resilience bill, a proposal stemming from the work of the Citizens' Convention on Climate, which targets a decline of at least 40% in greenhouse gas emissions by 2030.



CO₂ emissions by km² in 2020 in Paris and its region

Press contact:

SUEZ

Elodie Vandevorde

elodie.vandevorde@suez.com

+33 (0)6 78 36 19 52

Twitter: [@suez](https://twitter.com/suez)

Origins.earth:

A French start-up, Origins.earth makes tools and solutions available to local authorities allowing them to accelerate their fight against climate change. Launched in 2017 within SUEZ, this project was born of a simple observation: while 70% of anthropic CO₂ emissions come from urban areas, cities lack precise information to steer their emission reduction policies and leverage available funding. In 2020, Origins.earth signed a partnership with the French Climate and Environment Sciences Laboratory, the City of Paris and the Paris Climate Agency, with the goal of setting up an observatory for measuring CO₂ emissions in Paris and the Ile-de-France region, and then extend these solutions to other local authorities to help them achieve their low carbon targets.

SUEZ

Head Office: Tour CB21 - 16, Place de l'Iris, 92040 Paris La Défense Cedex, France - Tel: +33 (0)1 58 81 20 00 - www.suez.com

Limited Liability Company with a share capital of €2,513,450,316 – Siren (French business administration number) 433 466 570 RCS Nanterre – VAT FR 76433 466 570

About SUEZ:

Since the end of the 19th century, SUEZ has built expertise aimed at helping people to constantly improve their quality of life by protecting their health and supporting economic growth. With an active presence on five continents, SUEZ and its 90,000 employees strive to preserve our environment's natural capital: water, soil, and air. SUEZ provides innovative and resilient solutions in water management, waste recovery, site remediation and air treatment, optimizing municipalities' and industries' resource management through "smart" cities and improving their environmental and economic performance. The Group delivers sanitation services to 64 million people and produces 7.1 billion m³ of drinking water. SUEZ is also a contributor to economic growth, with more than 200,000 jobs created directly and indirectly on an annual basis, and a provider of new resources, with 4.2 million tons of secondary raw materials produced. By 2030, the Group is targeting 100% sustainable solutions, with a positive impact on our environment, health and climate. SUEZ generated total revenue of €17,2 billion in 2020.

Read the latest news from the SUEZ Group
on the [SUEZ website](#) & on social media



SUEZ

Head Office: Tour CB21 - 16, Place de l'Iris, 92040 Paris La Défense Cedex, France - Tel: +33 (0)1 58 81 20 00 - www.suez.com

Limited Liability Company with a share capital of €2,513,450,316 – Siren (French business administration number) 433 466 570 RCS Nanterre – VAT FR 76433 466 570